



# 2nd ANNUAL New York Coronary and Vascular Summit (NYCVS)

**TUESDAY, OCTOBER 2, 2018**

MONTEFIORE, MOSES CAMPUS

Tishman Learning Center

111 E. 210th Street

Bronx, NY 10467

## DIRECTORS

### **JOSE M. WILEY, MD, MPH**

Associate Professor of Medicine  
Albert Einstein College of Medicine  
Director of Endovascular Interventions  
Division of Cardiology  
Montefiore Medical Center

### **GEORGE DANGAS, MD, PhD**

Professor of Medicine  
Icahn School of Medicine at Mount Sinai  
Director of Cardiovascular Innovations  
Zena and Michael A. Weiner Cardiovascular Institute  
Mount Sinai Medical Center

Provided by  
Albert Einstein College of Medicine and Montefiore

### **ROBERT T. PYO, MD**

Associate Professor of Medicine  
Stony Brook School of Medicine  
Director Interventional Cardiology & Cardiac  
Catheterization Laboratory  
Medical Director, Structural Heart Program  
Stony Brook Medical Center

**REGISTER NOW**  
<https://nycvs.org/>

# GENERAL INFORMATION

---

## CONFERENCE LOCATION

Montefiore Medical Center – Tishman Learning Center  
111 E. 210th Street (Gun Hill Road Entrance), Bronx, NY 10467  
Directions: [www.montefiore.org/locations-directions-parking](http://www.montefiore.org/locations-directions-parking)

## DATE

Tuesday, October 2, 2018

## STATEMENT OF NEED

Coronary Artery Disease (CAD) is a world epidemic affecting over 110 million people and causes over 8.9 million deaths annually. It is the most common cause of death in the world and contributes to 15.9% of the total. In the United States 20% of those over 65 have CAD. Structural Heart Disease increases both morbidity and mortality in the elderly population. Epidemiological studies have determined that one in eight people aged 75 or older have moderate or severe aortic stenosis and one in ten have moderate or severe mitral regurgitation. Likewise, Peripheral Arterial Disease (PAD) affects 155 million people worldwide. In 2015 it was responsible for over 52,500 deaths up from 16,000 deaths in 1990. It is associated with a 20% risk of a coronary event in 10 years and a 5-year mortality rate of 30%. The New York Coronary and Vascular Summit (NYCVS) is organized in conjunction with the Albert Einstein College of Medicine/ Montefiore Medical Center faculty from the section of Cardiology. It has partnered with faculty from the section of interventional cardiology of Stony Brook School of Medicine and faculty from the section of interventional cardiology of the Icahn School of Medicine at Mount Sinai. Guest faculty includes national and international thought leaders in the field of Interventional Cardiology, Vascular Surgery and Interventional Radiology.

## ACTIVITY GOALS AND OVERVIEW

The goals of this activity are to enhance knowledge and improve understanding in the management of CAD/Structural Heart Disease and PAD. In this one day program we will address non-invasive evaluation and current interventional approaches as well as novel and emerging therapies to complex coronary and peripheral arterial disease. There will be didactic presentations, debates, and live interactive cases to enhance the audience understanding.

# New York Coronary and Vascular Summit (NYCVS)



## LEARNING OBJECTIVES

After attending this activity, you will be able to:

- Select the appropriate revascularization strategy in the treatment of unprotected left main disease.
- Plan for the best interventional strategy with increasing wire escalations for revascularization of chronic total occlusion.
- Apply case selection and choose the appropriate interventional devices for CAD, Structural Heart Disease and PAD treatment.
- Choose the appropriate mechanical support device in high risk coronary interventions in the setting of severe left ventricular dysfunction.
- Understand the new technology, devices and approaches in the carotid stenting.
- Discuss novel imaging approaches in CAD, Structural Heart Disease and PAD.

## INTENDED AUDIENCE

This activity is specifically designed for:

- Interventional cardiologists who manage patients with complex coronary and vascular lesions for revascularization
- Heart failure interventionist
- Interventional radiologists and vascular surgeons
- Cardiology fellows with an interest in Interventional Radiology and Endovascular Interventions
- Nurses, technicians, and other allied health care professionals who work in Cardiac Catheterization and Vascular Laboratories

## ACCREDITATION

Albert Einstein College of Medicine is accredited by the Accreditation Council for Continuing Medical Education to provide continuing medical education for physicians.

## CREDIT DESIGNATION

Albert Einstein College of Medicine designates this live activity for a maximum of **7.0 AMA PRA Category 1 Credits™**. Physicians should claim only the credit commensurate with the extent of their participation in the activity.

## VERIFICATION OF ATTENDANCE

Verification of attendance will be provided to all professionals.

## GRANTS

Should this activity receive support in part by educational grants or in-kind materials, in accordance with ACCME Standards appropriate acknowledgement will be given at the time of the activity. At the time of this printing, list of commercial supporters (financial or in-kind) was incomplete and not available.



## SPECIAL NEEDS (ADA)

Albert Einstein College of Medicine Montefiore Medical Center fully complies with the legal requirements of the Americans with Disabilities Act. If any participant is in need of special accommodations, please submit a written request at least two weeks prior to the activity to Center for Continuing Medical Education, 3301 Bainbridge Avenue, Bronx, NY 10467.

## CANCELLATION POLICY

Request for refunds MUST be received in writing by **September 24, 2018** and will be subject to an administration fee of \$35.00. **NO REFUNDS WILL BE MADE AFTER THIS DATE.**

## CONFLICT OF INTEREST

The "Conflict of Interest Disclosure Policy" of the Albert Einstein College of Medicine requires that faculty participating in any CME activity disclose to the audience any relationship(s) with a commercial interest; pharmaceutical or equipment company\*. Any presenter whose disclosed relationships prove to create a conflict of interest, with regards to their contribution to the activity, will not be permitted to present.

Albert Einstein College of Medicine also requires that faculty participating in any CME activity disclose to the audience when discussing any unlabeled or investigational use of any commercial product or device, not yet approved in the United States.

The staff of CCME of Albert Einstein College of Medicine have no conflicts of interest with commercial interests related directly or indirectly to this educational activity.

*\* The ACCME defines Commercial Interest as an entity producing, marketing, re-selling or distributing health care goods or services consumed by or used on patients. The ACCME does not consider providers of clinical service directly to patients to be commercial interest.*

## FOR FURTHER INFORMATION CONTACT

---

### CENTER FOR CONTINUING MEDICAL EDUCATION

Call us at 718-920-6674 E-mail [npiacent@montefiore.org](mailto:npiacent@montefiore.org)



# CONFERENCE SCHEDULE

## MORNING SESSION

- 7:30 – 8:25AM** Registration and Continental Breakfast
- 8:25 – 8:30** Welcome: *Mario J. Garcia, MD*
- 8:30 – 9:30** **Calcified Lesion Summit – Moderators:** *Giora Weisz, MD, Robert T. Pyo, MD*
- 8:30 – 8:40 Coronary Lecture- My Algorithm for Treating Calcific CAD – *Samin Sharma, MD*
- 8:40 – 8:50 Coronary Case Review #1 – Calcified Left Main Lesion – *On Chen, MD*
- 8:50 – 9:00 Coronary Case Review #2 – Calcified CTO – *Dimitri Karpaliotis, MD*
- 9:00 – 9:10 Peripheral Lecture - My Algorithm for Treating Calcific PAD – *John P. Reilly, MD*
- 9:10 – 9:20 Peripheral Case Review #1 – SFA CTO – *Sachin K.A. Jain, MD*
- 9:20 – 9:30 Peripheral Case Review #2 – Iliac Artery – *John P. Reilly, MD*
- 9:30 – 9:45** Break
- 9:45 – 12:35PM** **Peripheral Artery Disease Summit – Moderator:** *Prakash Krishnan, MD*
- 9:45 – 9:55 Non-Invasive Algorithm for Evaluating Patients with PAD – *Ian Del Conde Pozzi, MD*
- 9:55 – 10:05 CT or MRI in the Evaluation of the Claudicant: When and Why?  
*David A. Hirschl, MD*
- 10:05 – 10:15 Update on DEB for SFA Stenosis in the Claudicant Patient – *Prakash Krishnan, MD*
- 10:15 – 10:25 DEB/DES Infrapopliteal Artery – *Sanjum Sethi, MD*
- 10:30 – 11:30** **Live Case #1 – Peripheral**
- Operators:** *Jose M. Wiley, MD, Amit Kakkar, MD*
- Moderator:** *Prakash Krishnan, MD*
- Panelists:** *Ian Del Conde Pozzi, MD, Douglas Drachman, MD, Rajesh Malik, MD, Sanjum Sethi, MD, David A. Hirschl, MD, John P. Reilly, MD*
- 11:30 - 12:30PM** **Concepts of Endovascular Interventions – Moderator:** *John P. Reilly, MD*
- 11:30 – 11:40 Advanced Peripheral Interventions – Pedal Access, CLI, etc. – *Rajesh Malik, MD*
- 11:40 – 11:50 Access Site Complications: Why and How to Treat – *Douglas Drachman, MD*
- 11:50 – 12:00 EVAR 1st Line Therapy for Ruptured Aortic Aneurysms – *Evan C. Lipsitz, MD*
- 12:00 – 12:10 Periscope, Fenestrated Grafts, Chimney for Complex AAA – *James F. McKinsey, MD*
- 12:10 – 12:20 Carotid Stenting in 2018 – New Stent Design: Enough to Overcome Limitations in Octogenarians? – *Peter Faries, MD*
- 12:20 – 12:30 Direct Carotid Access for Acute Stroke Interventions – *Mehmet Cilingiroglu, MD*
- 12:30 – 1:30** Lunch

## AFTERNOON SESSION

- 1:30 – 5:00**      **Coronary and Structural Program**  
**Moderators:** *George Dangas, MD, PhD, Jose M. Wiley, MD*
- 1:30 – 1:45      The “Modern” History of PCI – Trends and Indications Since Courage  
*Cindy Grines, MD*
- 1:45 – 2:00      The Growing Need for Complex Coronary Intervention 2018 – *Ajay J. Kirtane, MD*
- 2:00 – 2:15      Percutaneously Placed Ventricular Support Devices – What and When  
*Ulrich P. Jorde, MD*
- 2:15 – 2:45**      **Optimal Duration for Dual Antiplatelet Therapy (DAPT) After PCI –  
What is Optimal?**
- 2:15 – 2:25      Longer is Better – *Giora Weisz, MD*
- 2:25 – 2:28      Shorter is Better – *Usman Baber, MD*
- 2:28 – 2:38      Rebuttal- Longer is Better – *Giora Weisz, MD*
- 2:38 – 2:41      Rebuttal- Shorter is Better – *Usman Baber, MD*
- 2:41 – 2:45      Discussion
- 2:45 – 3:30**      **Live Case #2 – Coronary/Structural Case**  
**Operators:** *Robert T. Pyo, MD, Puja Parikh, MD*  
**Moderator:** *George Dangas, MD, PhD*  
**Panelists:** *Joanna Chikwe, MD, Susheel Kodali, MD, Michael Mack, MD, Pedro Cox-Alomar, MD,  
Michael N. Johnson, MD, Mark Menegus, MD, Juan Terre, MD, Sulejman Celaj, MD*
- 3:30 – 3:45**      **Break**
- 3:45 – 5:00**      **Concepts of Structural Heart Interventions**  
**Moderators:** *George Dangas, MD, PhD, Robert E. Michler, MD*
- 3:45 – 4:00      Perspectives on the Treatment of Concomitant CAD and Valve Disease  
Surgeon’s Perspective – *Joanna Chikwe, MD*
- 4:00 – 4:15      Interventional Cardiologist’s Perspective – *Susheel Kodali, MD*
- 4:15 – 4:20      Discussion
- 4:20 – 4:30      TAVR 2018 – Are We Ready for Prime Time in the Low Risk Patient?  
*Michael Mack, MD*
- 4:30 – 4:45      Percutaneous Treatment for Mitral and Tricuspid Valves –  
What is State of the Art? – *Duane S. Pinto, MD*
- 4:45 – 4:55      Post TAVR Rx of CAD – *Usman Baber, MD*
- 4:55 – 5:00**      **Closing Remarks and Plans for Next Year’s Symposium:** *George Dangas, MD, PhD*

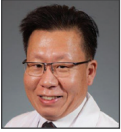


## COURSE DIRECTORS



### **Jose M. Wiley, MD, MPH**

Associate Professor of Medicine  
Albert Einstein College of Medicine  
Director Cardiac Catheterization Laboratory-Moses Division  
Director of Endovascular Interventions  
Division of Cardiology  
Montefiore-Einstein Center for Heart and Vascular Care



### **Robert T. Pyo, MD**

Associate Professor of Medicine  
Stony Brook School of Medicine  
Director Interventional Cardiology & Cardiac Catheterization Laboratory  
Medical Director, Structural Heart Program  
Stony Brook Medical Center



### **George Dangas, MD, PhD**

Professor of Medicine  
Icahn School of Medicine at Mount Sinai  
Director of Cardiovascular Innovations  
Zena and Michael A. Weiner Cardiovascular Institute  
Mount Sinai Medical Center

## FACULTY

### **Sulejman Celaj, MD**

Assistant Professor of Medicine  
Chief of Cardiology  
St. Barnabas Health System

### **Mario J. Garcia, MD**

Professor of Medicine and Radiology  
Albert Einstein College of Medicine  
Co-Director, Montefiore-Einstein Center for Heart and Vascular Care  
Chief, Division of Cardiology  
Pauline Levitt Endowed Chair in Medicine  
Montefiore-Einstein Center for Heart and Vascular Care

### **David A. Hirschl, MD**

Assistant Professor of Radiology  
Albert Einstein College of Medicine  
Montefiore Medical Center- North Campus

### **Sachin K.A. Jain, MD, FACC**

Interventional Cardiologist  
Endovascular Specialist  
Montefiore Medical Center

### **Michael N. Johnson, MD**

Interventional Cardiologist  
Montefiore-Einstein Center for Heart and Vascular Care

### **Ulrich P. Jorde, MD, FACC**

Professor of Medicine  
Albert Einstein College of Medicine  
Vice Chief, Division of Cardiology  
Section Head, Heart Failure, Cardiac Transplantation and Mechanical Circulatory Support  
Montefiore-Einstein Center for Heart and Vascular Care

## **FACULTY (CONTINUED)**

### **Amit Kakkar, MD**

Assistant Professor of Medicine  
Albert Einstein College of Medicine  
Associate Director Endovascular Interventions  
Jacobi Medical Center

### **Evan C. Lipsitz, MD**

Associate Professor of Surgery (Vascular Surgery)  
Albert Einstein College of Medicine  
Chief Division of Vascular and Endovascular Surgery  
Department of Cardiovascular and Thoracic Surgery  
Montefiore-Einstein Center for Heart and Vascular Care

### **Mark A. Menegus, MD**

Professor of Medicine (Cardiology)  
Albert Einstein College of Medicine  
Director Cardiac Catheterization Laboratory-Jack Weiler Division  
Montefiore Medical Center

### **Robert E. Michler, MD**

Surgeon-in-Chief  
Professor and Chairman, Department of Surgery  
Professor and Chairman, Department of Cardiothoracic Surgery and Vascular Surgery  
Montefiore Medical Center  
Albert Einstein College of Medicine

### **Juan A. Terre, MD**

Assistant Professor of Medicine  
Albert Einstein College of Medicine

### **Giora Weisz, MD**

Director of Interventional Cardiology  
Montefiore-Einstein Center for Heart and Vascular Care

## **GUEST FACULTY**

### **Usman Baber, MD, MS**

Assistant Professor of Medicine  
Icahn School of Medicine at Mount Sinai  
Director of Clinical Biometrics  
Cardiovascular Institute  
Mount Sinai Medical Center  
New York, NY

### **On Chen, MD**

Assistant Professor of Medicine  
Interventional Cardiology  
Director, Outpatient Services  
Division of Cardiology  
Stony Brook University  
Stony Brook, NY

### **Joanna Chikwe, MD**

General Ting Feng Endowed Chair  
Professor of Surgery  
Chief, Cardiothoracic Surgery  
Director, Heart Institute  
Stony Brook University Hospital  
Stony Brook, NY



## GUEST FACULTY (CONTINUED)

### **Mehmet Cilingeroglu, MD**

Professor of Medicine and Biomedical Engineering  
Arkansas Heart Hospital  
Little Rock, AR

### **Pedro Cox-Alomar, MD, MPH**

Assistant Professor of Medicine  
Louisiana State University School of Medicine  
Director Structural Heart Program  
Medical Center of Louisiana  
New Orleans, LA

### **Ian Del Conde Pozzi, MD**

Associate Professor of Medicine and Radiology  
Morsani College of Medicine  
University of South Florida  
Director, Vascular Medicine Program  
Miami Cardiac Vascular Institute  
Miami, FL

### **Douglas Drachman, MD**

Assistant Professor of Medicine  
Harvard Medical School  
Director of Education, Division of Cardiology  
Massachusetts General Hospital  
Boston, MA

### **Peter Faries, MD**

Professor of Surgery  
Icahn School of Medicine at Mount Sinai  
Chief Vascular Surgery  
Mount Sinai Medical Center  
New York, NY

### **Cindy Grines, MD**

Chairman, Cardiology  
Donald and Barbara Zucker School of Medicine at Hofstra/Northwell  
Interim Chairman  
North Shore University Hospital and Long Island Jewish Hospital  
New York, NY

### **Dimitri Karpaliotis, MD**

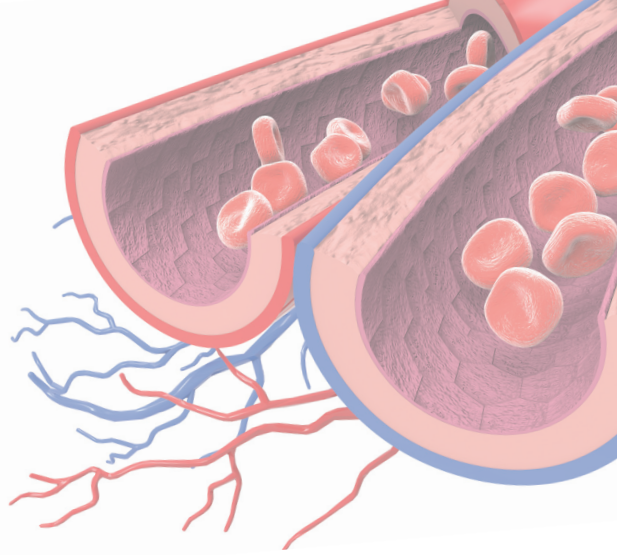
Associate Professor of Medicine  
Columbia University College of Physicians and Surgeons  
Director of CTO, Complex and High-Risk Angioplasty  
New York-Presbyterian Hospital/Columbia University Medical Center  
New York, NY

### **Ajay J. Kirtane, MD, MS**

Associate Professor of Medicine  
Columbia University College of Physicians and Surgeons  
Chief Academic Officer, Center for Interventional Vascular Therapy  
Director Cardiac Catheterization Laboratories  
New York-Presbyterian Hospital/Columbia University Medical Center  
New York, NY

### **Susheel Kodali, MD**

Associate Professor of Medicine  
Director, Structural Heart & Valve Center  
Columbia University Medical Center  
New York, NY



## **GUEST FACULTY (CONTINUED)**

### **Prakash Krishnan, MD, FACC**

Associate Professor of Medicine  
Icahn School of Medicine at Mount Sinai  
Director of Endovascular Services  
Mount Sinai Medical Center  
New York, NY

### **Michael Mack, MD**

Medical Director, Cardiovascular Surgery  
Baylor Health Care System  
Chairman of Baylor and Scott Heart Hospital  
Dallas, TX

### **Rajesh Malik, MD**

Associate Professor of Surgery  
Georgetown School of Medicine  
Director, Vascular Surgery Fellowship  
MedStar Health  
Washington, DC

### **James F. McKinsey, MD**

Professor of Surgery-Vascular Surgery  
Icahn School of Medicine at Mount Sinai  
Vice Chairman & Systems Chief of Complex Aortic Interventions  
Mount Sinai Health Care System  
New York, NY

### **Puja Parikh, MD**

Assistant Professor of Medicine  
Director, TAVR Program  
Division of Cardiology  
Stony Brook University  
Stony Brook, NY

### **Duane S. Pinto, MD, MPH**

Associate Professor of Medicine  
Harvard Medical School  
Chief, Interventional Cardiology Section  
Beth Israel Deaconess Medical Center  
Boston, MA

### **John P. Reilly, MD**

Director of Endovascular Interventions  
Stony Brook School of Medicine  
Stony Brook, NY

### **Sanjum Sethi, MD, MPH**

Assistant Professor of Medicine  
Columbia University College of Physicians and Surgeons  
New York, NY

### **Samin K. Sharma, MD**

Professor of Medicine and Dean of Interventional Clinical Affiliations  
Icahn School of Medicine at Mount Sinai  
The Mount Sinai Hospital  
New York, NY

# New York Coronary and Vascular Summit (NYCVS)

**October 2, 2018**

## REGISTRATION FORM

Name \_\_\_\_\_  
First MI Last Degree

Mailing Address \_\_\_\_\_

City \_\_\_\_\_ State \_\_\_\_\_ Zip \_\_\_\_\_

Daytime Telephone \_\_\_\_\_ Specialty \_\_\_\_\_

Email \_\_\_\_\_

Special Dietary Needs:  Kosher  Vegetarian  Gluten-Free

### REGISTRATION FEE

Practicing Physicians: \$110.00

Fellow, Resident, RN, PA, NP &  
Allied Health Professionals \$ 35.00

Einstein/Montefiore and Affiliates Complimentary

**REGISTRATION ONLINE** <https://nycvs.org/>

### CANCELLATION POLICY

Request for refunds MUST be received in writing by **September 24, 2018** and will be subject to an administration fee of \$25.00. **NO REFUNDS WILL BE PROCESSED AFTER THIS DATE.**

## FOR FURTHER INFORMATION CONTACT

### CENTER FOR CONTINUING MEDICAL EDUCATION

Call us at 718-920-6674 E-mail [npiacent@montefiore.org](mailto:npiacent@montefiore.org)